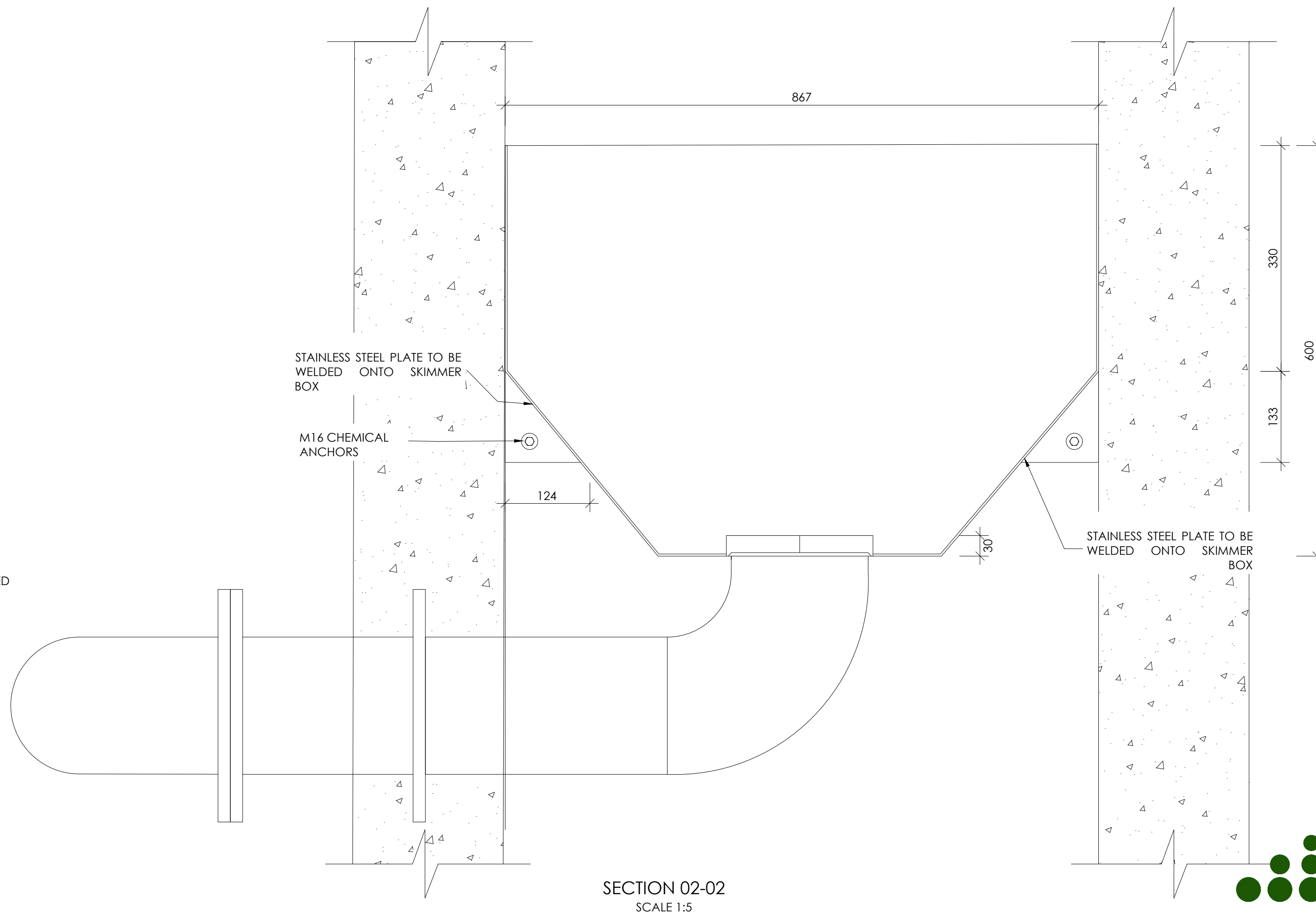
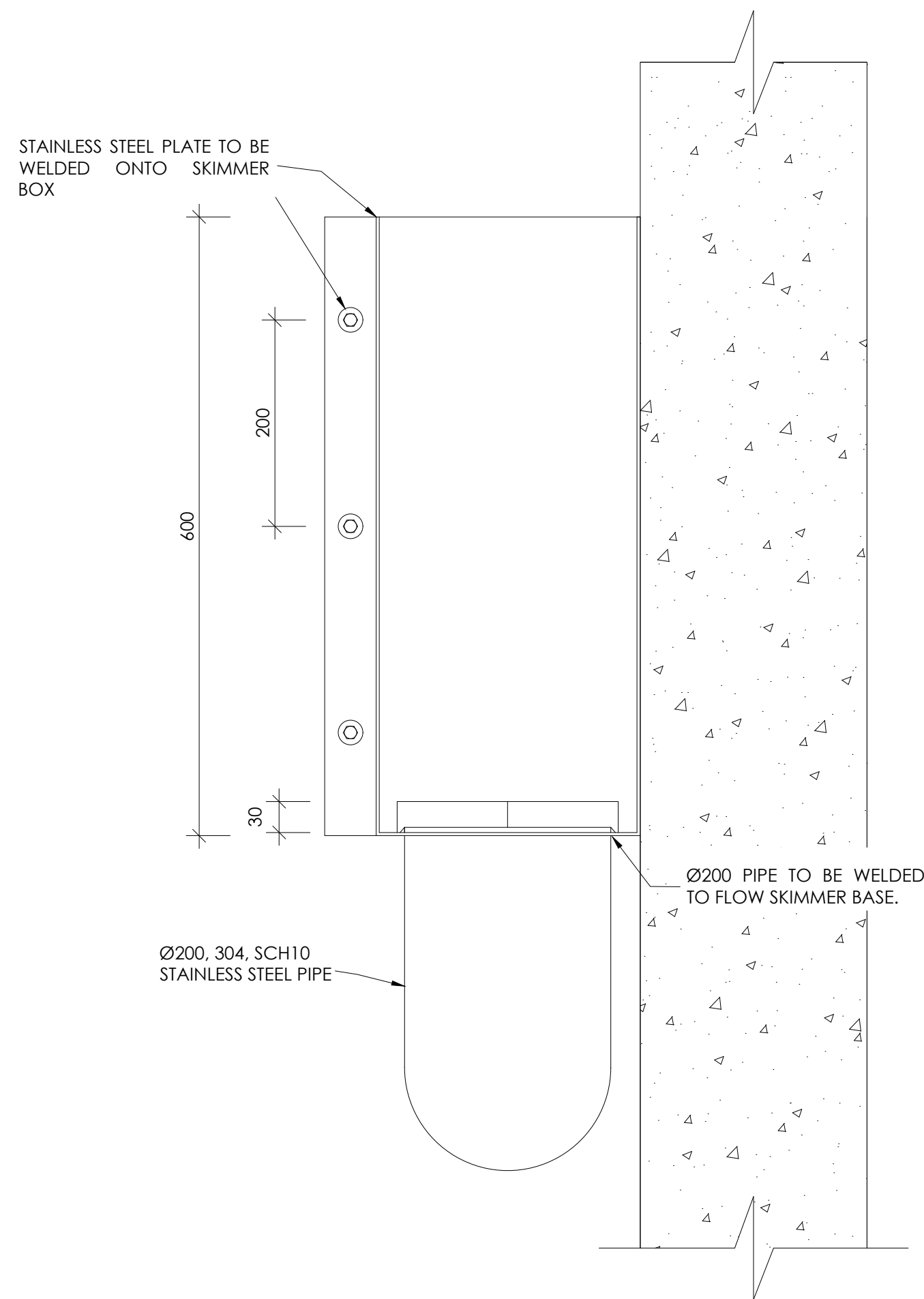
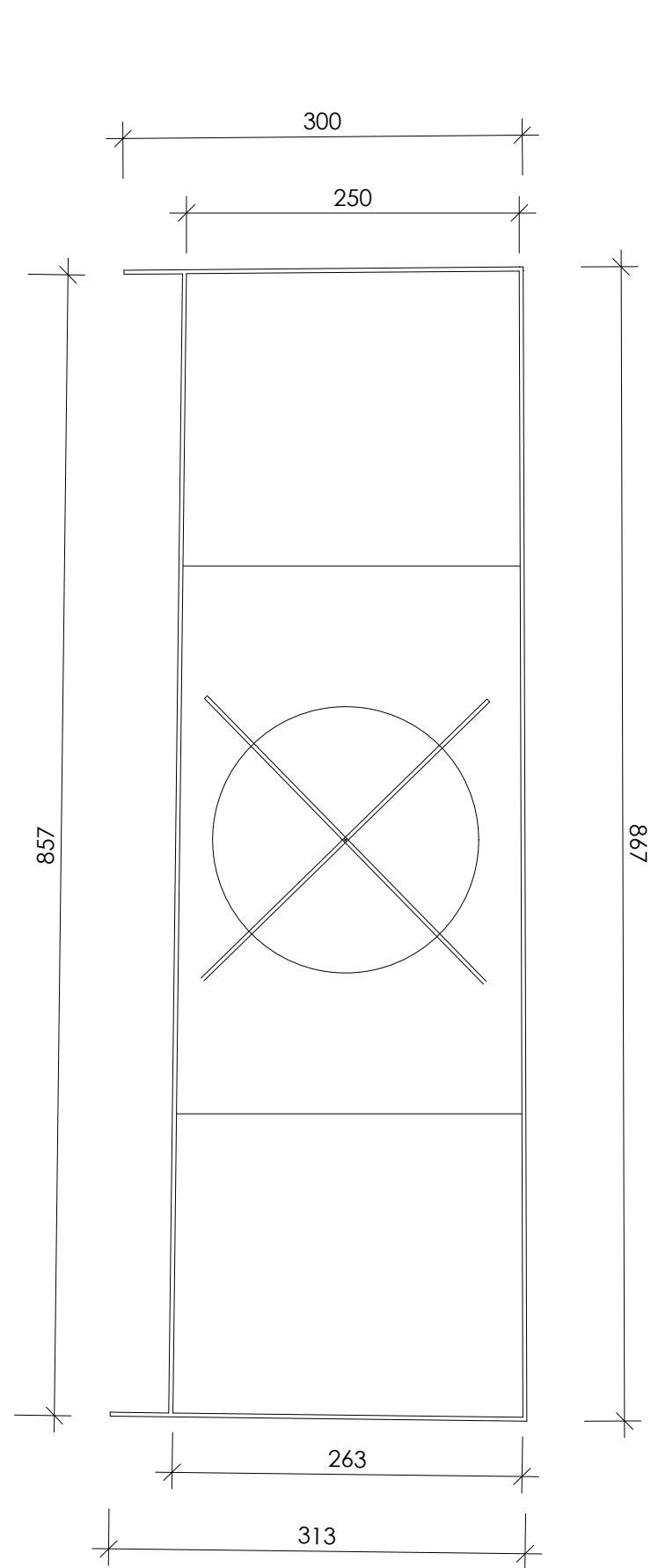
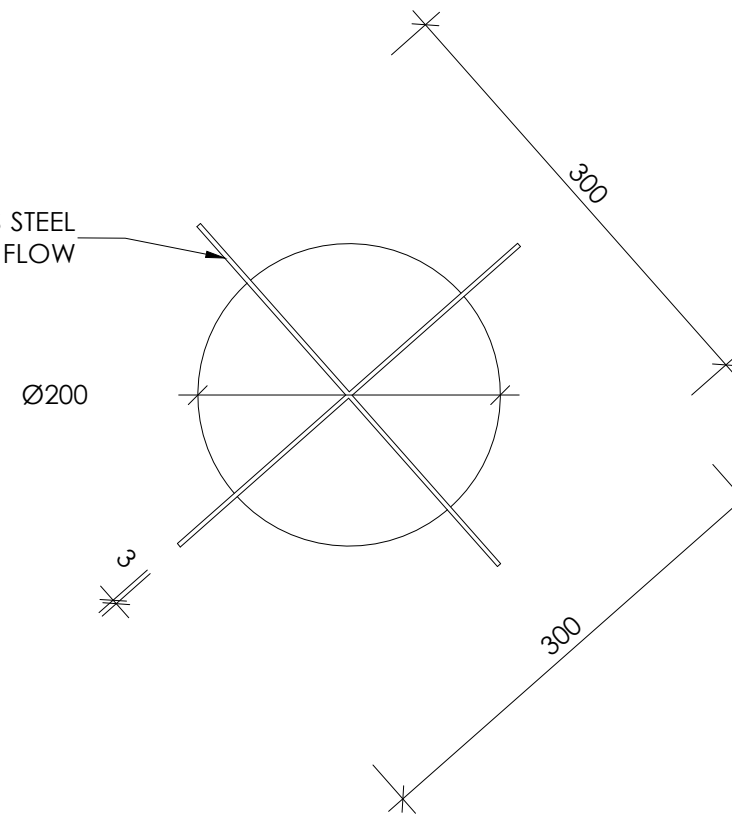


3MM THICK STAINLESS STEEL
PLATE WELDED TO FLOW
SKIMMER BOX BASE



FLOW SKIMMER	
SPECIFICATION	DESCRIPTION & DIMENSIONS (mm)
MATERIAL	SS 304
THICKNESS	3
ALL WELDS SHOULD BE FUSION WELDS. WELDS SHALL BE PASSIVATED.	

NOTES:

LOCAL MUNICIPALITY: MAP


SPONSOR & REGULATOR: DWS


ISSUED FOR TENDER

0 100 MILLIMETRES ON ORIGINAL DRAWING 50

Ⓐ BEFORE CONTRACT COMMENCES

Ⓐ AFTER CONSTRUCTION CONTRACT HAS COMMENCED

Nr.	DATE	AMENDMENTS

COPYRIGHT IS VESTED IN V3 CONSULTING ENGINEERS
IN TERMS OF THE COPYRIGHT ACT (ACT 98 OF 1978)

CLIENT / IMPLEMENTING AGENT

 **vaal central water** naturally

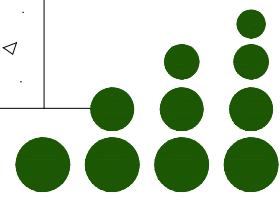

V3 CONSULTING ENGINEERS
T : +27 51 045 1950
Suite 31, Nobel House, 196 Nelson Mandela Road,
Brandwag, Bloemfontein, 9301 

PROJECT
TSHAME WWTW REFURBISHMENT

DRAWING DESCRIPTION
FLOW SKIMMER

DRAWING NO.	REVISION
10909001 - 6018	T1

DESIGNED:	AK	CHECKED:	ECOSA PR No: 20130658
DRAWN:	EMT	SCALE:	1:100 A1
APPROVED:	ECOSA PR No: 20130658	INCEPTION DATE:	SEPT'24
FILE PATH:	SHAREPOINT / BLOEMFONTEIN - 10909001 TSHAME WWTW / 04 DOC PROC / 04 DRAW		


VIRTUAL
CONSULTING ENGINEERS
ISSUED FOR TENDER